



## Juniordiplom 3 – Praxis für Querflöte

Anforderungen:

- Drei selbstgewählte Spielstücke: ein schnelles, ein langsames, ein frei wählbares auswendig (ca 1Min lang)
- Drei Lieder unvorbereitet ab Blatt spielen mit folgenden Notenwerten:  

- Dynamikcheck ab Blatt mit:  
*ff, f, mf, mp, p, pp, sfp, fp cresc., decresc.*
- Rhythmuscheck ab Blatt mit:  

- Tonleitertraining spielen. Nimm dieses Blatt zum Vorspieltag am 3. Mai 2017 mit!

Dauer des gesamten Checks ca. 15 Minuten

---

Dies ist ein Beispiel eines Dynamikchecks. Am Vorspieltag erhältst du einen ähnlichen Check (spielen, klatschen oder sprechen).

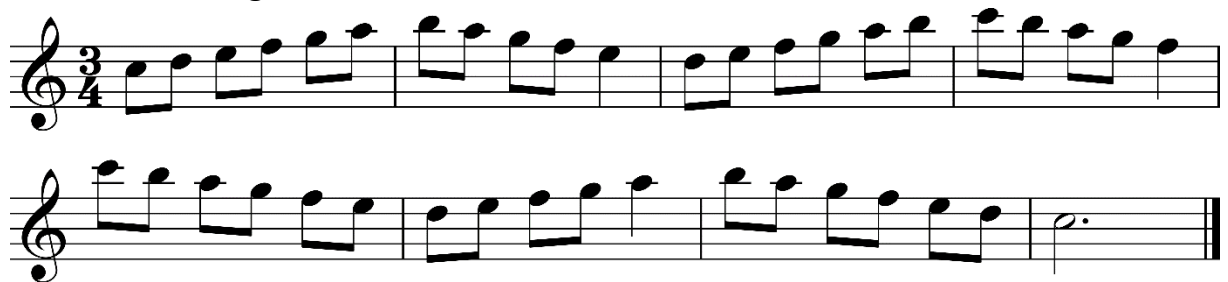
The image shows two lines of musical notation on a five-line staff. The first line starts with a 3/4 time signature and a half note with a dynamic marking of *p*. This is followed by a quarter note with a dynamic marking of *f*, and a quarter note with a dynamic marking of *mp*. The second line starts with a quarter note with a dynamic marking of *ff*, followed by a quarter note with a dynamic marking of *pp*, a quarter note with a dynamic marking of *fp*, and a quarter note with a dynamic marking of *mf*. The piece ends with a double bar line.

Dies sind zwei Beispiele eines Rhythmuschecks. Am Vorspieltag erhältst du einen ähnlichen Check (spielen, klatschen oder sprechen).

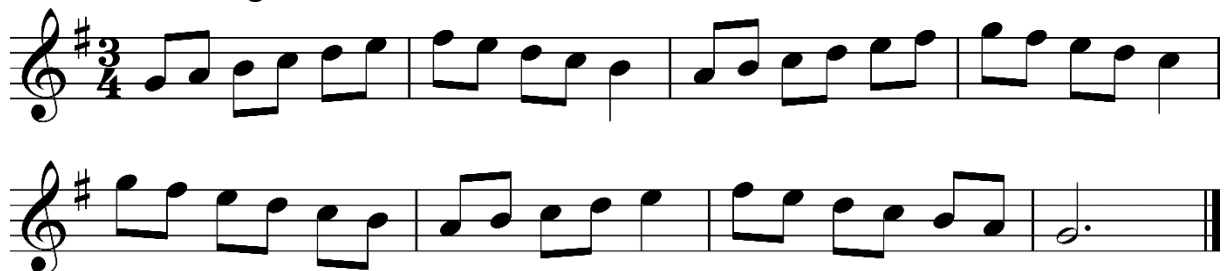


Das Tonleitertraining 1 bis 5 kannst du üben, da du diese am praktischen Vorspieltag vorspielen musst.

#### Tonleitertraining 1



#### Tonleitertraining 2



Tonleitertraining 3

Two staves of music for Tonleitertraining 3. The key signature is one sharp (F#) and the time signature is 3/4. The first staff contains four measures of an ascending eighth-note scale: F#4, G4, A4, B4, C5, D5, E5, F#5. The second staff contains four measures of a descending eighth-note scale: F#5, E5, D5, C5, B4, A4, G4, F#4, followed by a whole note F#4.

Tonleitertraining 4

Two staves of music for Tonleitertraining 4. The key signature is one flat (Bb) and the time signature is 3/4. The first staff contains four measures of an ascending eighth-note scale: Bb4, C5, D5, Eb5, F5, G5, Ab5, Bb5. The second staff contains four measures of a descending eighth-note scale: Bb5, Ab5, G5, F5, Eb5, D5, C5, Bb4, followed by a whole note Bb4.

Tonleitertraining 5

Two staves of music for Tonleitertraining 5. The key signature is two flats (Bb, Eb) and the time signature is 3/4. The first staff contains four measures of an ascending eighth-note scale: Bb4, C5, D5, Eb5, F5, G5, Ab5, Bb5. The second staff contains four measures of a descending eighth-note scale: Bb5, Ab5, G5, F5, Eb5, D5, C5, Bb4, followed by a whole note Bb4.