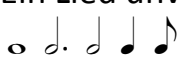
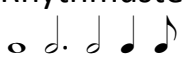


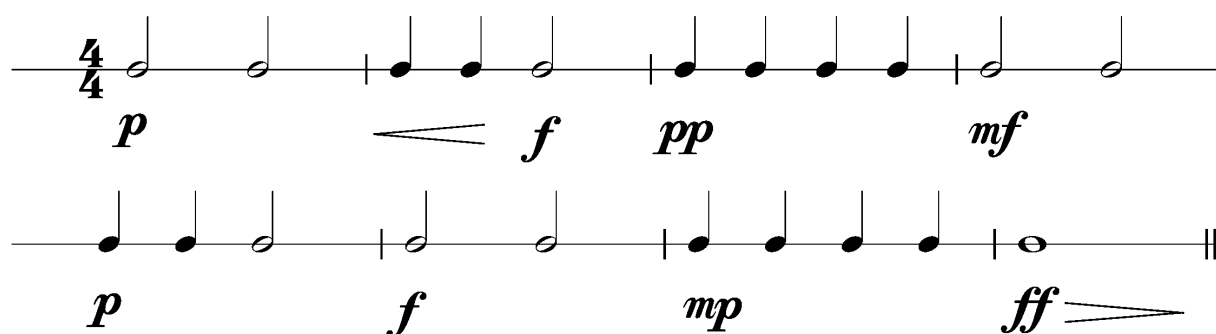
Juniordiplom 2 – Praxis für Querflöte

Anforderungen:

- Drei selbstgewählte Spielstücke: ein schnelles, ein langsames, ein frei wählbares
- Ein Lied unvorbereitet ab Blatt spielen mit folgenden Notenwerten:

- Dynamikcheck ab Blatt mit:
ff, f, mf, mp, p, pp, cresc., decresc.
- Rhythmustest ab Blatt mit:

- Tonleitertraining spielen. Nimm dieses Blatt zum Vorspieltag am 13. Mai 2017 mit!

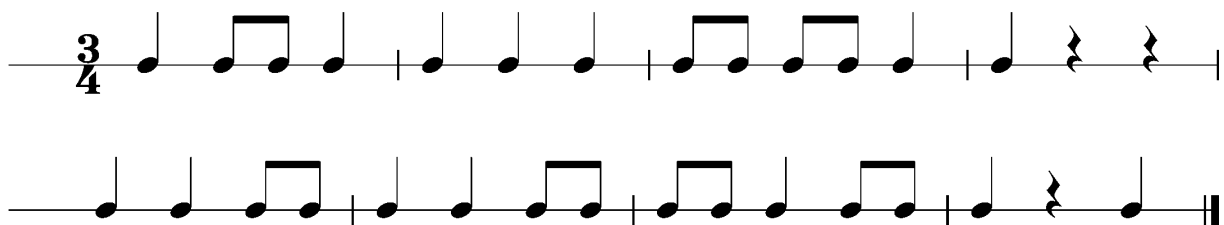
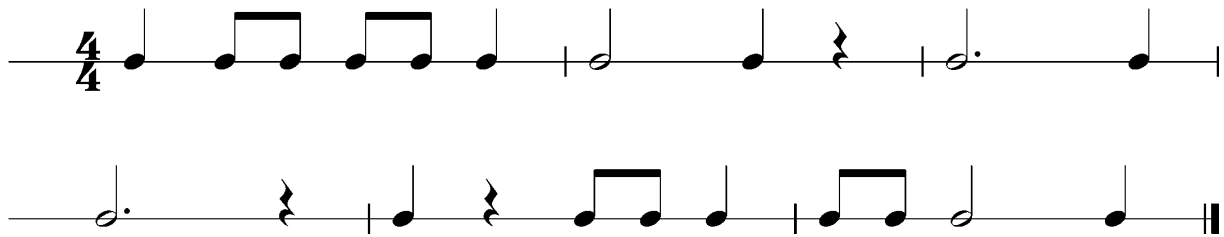
Dauer des gesamten Checks ca. 10 Minuten

Dies ist ein Beispiel eines Dynamikchecks. Am Vorspieltag erhältst du einen ähnlichen Check (spielen, klatschen oder sprechen).



The image shows two staves of musical notation in 4/4 time, illustrating a dynamic check exercise. The first staff contains four measures: the first measure has a half note with dynamic *p*; the second measure has two quarter notes with dynamic *f* and a wedge-shaped decrescendo hairpin; the third measure has four eighth notes with dynamic *pp*; the fourth measure has a half note with dynamic *mf*. The second staff contains four measures: the first measure has a half note with dynamic *p*; the second measure has two quarter notes with dynamic *f*; the third measure has four eighth notes with dynamic *mp*; the fourth measure has a whole note with dynamic *ff* and a wedge-shaped crescendo hairpin.

Dies sind zwei Beispiele eines Rhythmuschecks. Am Vorspieltag erhältst du einen ähnlichen Check (spielen, klatschen oder sprechen).



Die Tonleitertrainings 1 bis 3 kannst du üben, da du diese am Vorspieltag vorspielen musst.

Tonleitertraining 1



Das Tonleitertraining 2

The first section, 'Das Tonleitertraining 2', is written in B-flat major (one flat) and 4/4 time. It consists of four staves of music. Each staff contains a scale exercise starting on G4. The first two staves show the ascending scale: G4 (quarter), A4 (quarter), Bb4 (quarter), C5 (quarter), Bb4 (quarter), A4 (quarter), G4 (quarter), F4 (quarter), E4 (quarter), D4 (quarter), C4 (half). The third and fourth staves show the descending scale: C4 (half), D4 (quarter), E4 (quarter), F4 (quarter), G4 (quarter), A4 (quarter), Bb4 (quarter), C5 (quarter), Bb4 (quarter), A4 (quarter), G4 (quarter), F4 (quarter), E4 (quarter), D4 (quarter), C4 (half). The fourth staff ends with a double bar line.

Das Tonleitertraining 3

The second section, 'Das Tonleitertraining 3', is written in D major (two sharps) and 4/4 time. It consists of four staves of music. Each staff contains a scale exercise starting on D4. The first two staves show the ascending scale: D4 (quarter), E4 (quarter), F#4 (quarter), G4 (quarter), F#4 (quarter), E4 (quarter), D4 (quarter), C#4 (quarter), B4 (quarter), A4 (quarter), G4 (half). The third and fourth staves show the descending scale: G4 (half), A4 (quarter), B4 (quarter), C#4 (quarter), D4 (quarter), E4 (quarter), F#4 (quarter), G4 (quarter), F#4 (quarter), E4 (quarter), D4 (quarter), C#4 (quarter), B4 (quarter), A4 (quarter), G4 (half). The fourth staff ends with a double bar line.